

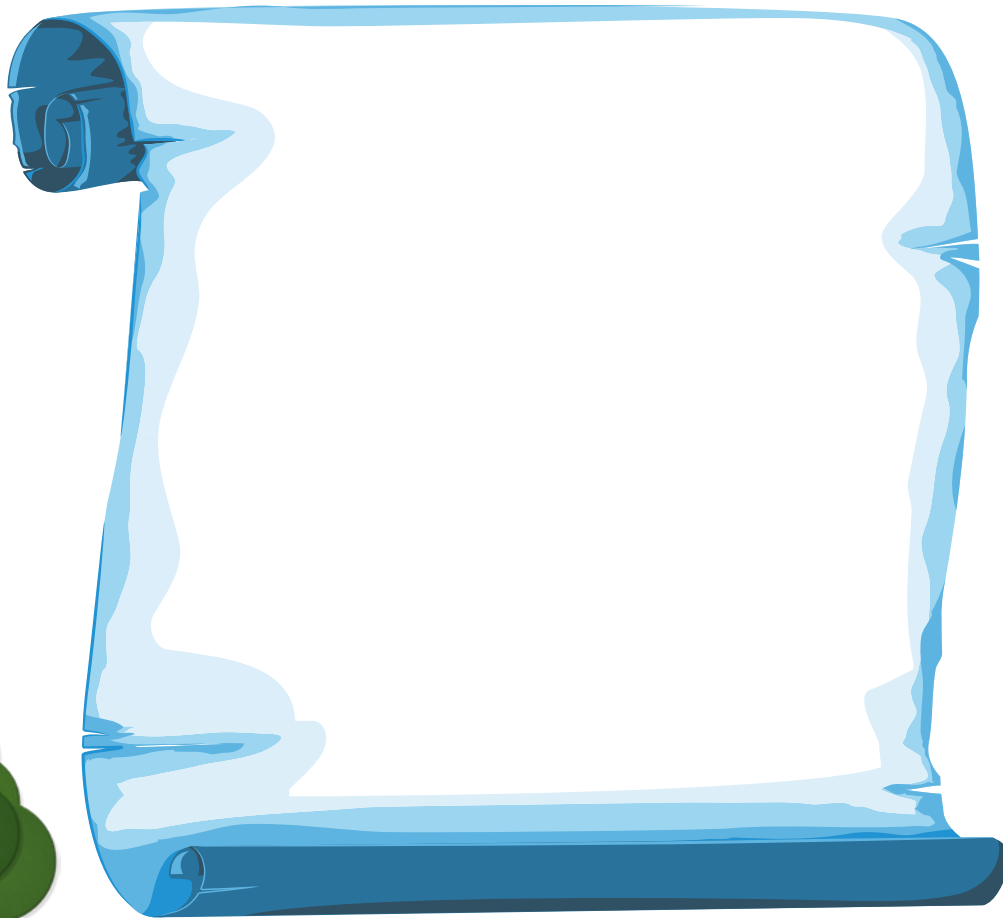
The Spirit of a Tree is Shade

The spirit of a tree is shade.
The spirit of grass is dew.
Everything is useful.
Everything speaks.

This poem has been translated from Chi-Gorongosi, the language spoken in Gorongosa, into English and Portuguese. Think about the meaning of the poem. Can you use your own words to explain what the poem is about? Why not use this space to have a go at translating the poem into another language?

...or

Make up your own poem about the importance of nature or the links between people and planet
...then illustrate your poem using lots of colour!



Remember to share your pupils' or child's work with us on our Facebook page
[@ourworldirishaidawards](#) or to our email: ourworld@realnation.ie

